



phetishskin

commissions guide

June 2026

WELCOME TO A CREATIVE COLLABORATION

Thank you for your interest in commissioning me.

Under the phetishskin pseudonym, my work is more than just illustration. It is an ongoing project in which I intend to make 'unfilmable scenes' - scenes of glamorous fantasy that would be impossible to create in the real world either due to practicality or budget.

When you commission a piece, you are entering into a creative partnership to contribute to this body of work.

I want every piece I produce to feel like a natural part of the phetishskin aesthetic. To ensure that, I work within a specific framework:

A Creative Collaboration

I do not simply take orders. I want to take your core concept and filter it through my artistic lens to create something special. We are collaborating to build a cinematic scene.

Curated Projects

My best work happens when I am genuinely excited by the narrative we are building. Because my art is a personal project, I am selective about what I take on.

If an idea falls outside my area of expertise or does not resonate with my artistic direction, I would much rather respectfully decline. I believe it is better to turn down a project than to spend your time and money on a piece that does not capture the vision we can both be proud of.

The phetishskin Standard

Whether it is a portrait or a complex scene, my focus is on a piece that will sit beside my existing body of work. By prioritising projects that fit within my oeuvre, I ensure that the work I produce for you is at the highest standard I can offer.

If this approach sounds like a good fit for your vision, I would love to hear your ideas. Let us see if we can create something that fits perfectly within the phetishskin project.



"The Architect"

ABOUT MY VISION AND PROCESS

My creative process is built on a foundation of high-end, cinematic art. Whether I am working on a portrait or a complex narrative scene, I approach the work with a specific set of principles:

The 'Unfilmable Scene'

My goal is to create scenes that go beyond the limitations of reality. I do not just paint a subject; I build an environment, curate the lighting and design custom costuming to achieve a cinematic quality that would be impossible to replicate in a physical studio.

My Artistic Signature

My work is defined by high-gloss materials like latex and chrome, intricate mechanical detail and a moody, atmospheric narrative.

Bespoke Design and Costuming

Much like a custom tattoo artist drafts a unique design specifically for your canvas, I frequently create bespoke latex designs, equipment and environmental elements from scratch for my commissions. If your concept requires a look that does not exist in the real world, I design it to fit the scene perfectly.

Human-Crafted Artistry

While generative AI tools have become common, my process remains 100% hand-drawn in Clip Studio Paint. I use photo references and 3D models for guidance and mock-ups, but I do not use AI to generate, assist, or train models. Furthermore, I do not permit my work to be used for these purposes. My motivation comes from the act of composing scenes, designing outfits and painting imagery; AI tools are, to me, unsatisfying, random and unpredictable, so I avoid them.



"The Induction of the Ordinand"

A Collaborative Directorship

I approach commissions as a director. We will work together to build a complete scene, not just a standalone portrait. Whether you arrive with a fully formed concept or a collection of ideas, I help you curate and focus them into a coherent brief.

Creative Boundaries

I keep my work safe, sane and sensible. I focus on specific themes: latex, gas masks, high-end fetish aesthetics, artistic nudity and power exchange. I do not produce content featuring explicit sexual acts, illegal themes, or subject matter that falls outside my specific expertise. If your request is outside my lane, I would much rather recommend another talented artist who specialises in those areas.

COMMISSION TIERS

My commission process is structured much like a custom tattoo studio. You are not simply buying a finished image; you are booking my time, expertise and dedication.

Tier 1 “Iconic Portrait”	Single figure, elevated aesthetics, simple atmosphere.	8-10 hours
Tier 2 “Cinematic Scene”	One or two figures, bespoke environment, prop design.	15-25 hours
Tier 3 “Grand Narrative”	Multi-figure scenes, complex choreography, world-building.	40+ hours

Examples:

Tier 1



“Hot Waxxx”

Tier 2



“Intimacy”

Tier 3



“The Entourage”

Time Tracking Policy: I track all working time directly within Clip Studio Paint. If I can complete a commission faster than estimated, this will be reflected in your final invoice. Should additional revisions or complex requests extend the project, these hours are tracked and added accordingly.

THE WORKFLOW

I follow a structured workflow for every commission. This keeps us both organised and ensures your vision is realised exactly as we planned.

I am a firm believer in the creative process, so I keep you updated at key milestones. Generally, I prefer more updates over fewer. Unless I have only made minor adjustments, expect an update from me at the end of each painting session. This can mean 10-15 update images, though a very complex work can easily hit 30.

To track progress, I will create a shared Google Slides document. I will paste your references and post every update of the painting there, creating an easily accessible shared record of the work. This avoids the clutter of scrolling through multiple messaging threads or email chains. I will grant you editing privileges on this document so you can add comments or additional reference material as needed.

Stage 1 - Consultation & Brief

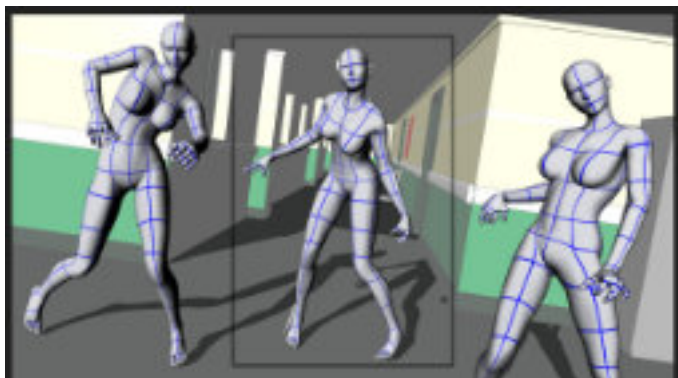
We start by discussing your idea. If you have a mood board or reference images, this is the time to share them. If you require the work to be a particular size or fit a particular frame, let me know. If you have specific costume, equipment or likeness requirements, let me know. If you have lighting references or specific examples of my past work that capture the mood you want, please include those too. I will then review your requirements to ensure the scope fits within my current capacity and artistic direction. If we are a good match, we move to the next step.

Stage 2 - Booking & Deposit

To secure your slot in my schedule, I require a non-refundable deposit. This confirms your booking and covers the initial research, material sourcing and time spent setting up the concept. I have implemented this policy to safeguard my time against projects that are abandoned mid-commission.

Stage 3 - The Sketch & Rough Phase

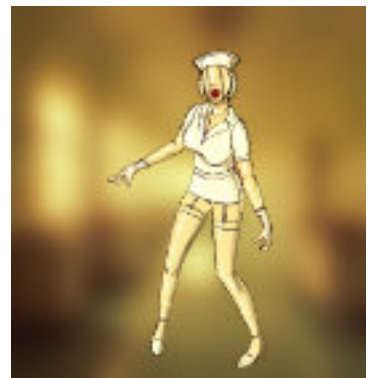
I create rough thumbnails, composition sketches or 3D mock-ups. This allows us to agree on the pose, lighting and composition before I commit to the full painting. We will focus on the 'big picture' elements here. This is the stage where we make structural changes, as the composition is locked once I start the final render. If this is a portrait requiring a specific likeness, this is the time to ensure we have the correct photo reference. The closer to the angle and position of the faces in the final piece, the better.



3D Pose, Composition & Cropping Mockup



Costume Design Sketch



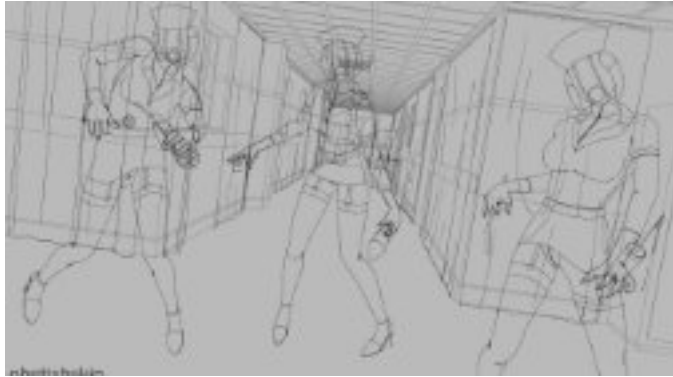
Lighting Target Sketch

Stage 4 - Execution & Painting

I begin the main build of the scene, which breaks down into the following stages:

Crisp linework

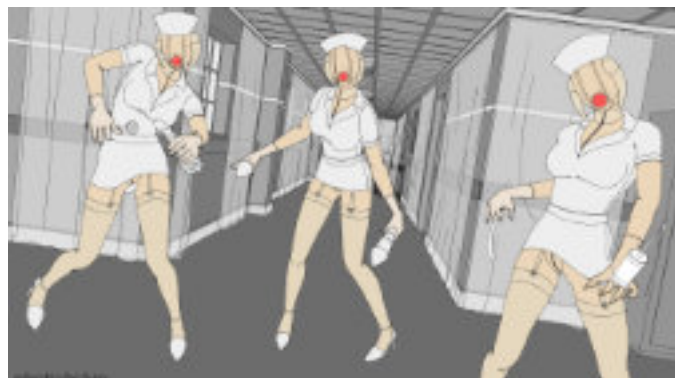
A precise black-and-white drawing of everything in the scene at correct proportions.



Linework

Flats

I separate all individual pieces into layers of flat colour to streamline the process. This includes skin, costume elements, characters, props and backgrounds.



Flats

Painting

I work on characters first before the background, ensuring likenesses and priority elements are revealed early. As the painting progresses, I slowly erase the linework to achieve the final rendered look.



Characters Painted



Characters & Backgrounds Linework Erased

Final lighting and Colour Balancing:

This is where the image comes together. I layer additional lighting, adjust contrast and refine colours to create a cohesive piece.



Final, Uncensored Artwork

Stage 5 - Final Review & Delivery

Once the painting is complete, I will send you a preview for final approval. Upon your confirmation, I will issue a final invoice. Once payment is made, I provide the final high-resolution files. My preferred method is a WeTransfer link sent to your email to ensure you receive the complete set of files efficiently.

Upon delivery, I will also provide optimised social media exports tailored for platforms like Instagram, ready for immediate sharing.

Platform-Friendly Exports

Because my work often involves high-end fetish aesthetics, I provide secondary, platform-friendly exports alongside your high-resolution files. This includes strategic paint-overs or subtle adjustments to ensure your images remain compliant for sharing on platforms like Instagram. My goal is to ensure you can share your commissioned work with confidence, regardless of platform constraints.



Final, Censored Artwork

(Note: phallic toy removed from hand of left 'nurse', opaque underwear)

File Transfer and Backup Policy

I keep archival copies of all works in my personal offline storage. I do not store final files in the cloud for retrieval. This keeps the work secure and prevents the need to maintain your backup indefinitely. Once you have confirmed receipt of your files, it is your responsibility to back them up for future use. I am not responsible for the loss of files once they have been successfully transferred to you.



"The Faces I Desire"

INVESTMENT AND PAYMENT TERMS

Deposit

A non-refundable deposit is required to secure your booking.

Final Payment

The balance is due upon receipt of the final invoice, before high-resolution files are released.

Scope Changes

Significant changes to the brief after the project has started will incur additional hourly charges.

Payment Methods

I operate exclusively via direct bank transfer to ensure security and prevent the risk of account suspension due to third-party policy conflicts.

International Payments

For international clients, payments are to be made via bank transfer or dedicated services like Wise. Please ensure that the final amount received in my UK account matches the total GBP invoice. Any currency conversion fees are the responsibility of the client. I accept the market-standard exchange rate at the time of the transfer, and minor discrepancies caused by exchange rate fluctuations will not be contested.

USAGE RIGHTS AND COMMERCIAL LICENSING

Unless otherwise agreed in a commercial contract, all commissions are for personal, non-commercial use.

Personal Use

You may display artwork on personal social media (with credit to phetishskin), print for home use or use as digital wallpaper. You may not claim the work as your own, alter it or sell it.

Commercial Use

Any use for profit, branding or merchandise requires a commercial licence. Licensing fees are applied as a percentage of the base commission fee.

AI Training Restriction

You may not use any artwork produced by me to train or refine any artificial intelligence models or generative tools.

Copyright

I retain the copyright to all artwork. I reserve the right to display commissions in my portfolio unless a confidentiality agreement was established during the consultation phase.

COLLECTOR'S PRINT SERVICE

I provide a premium, bespoke printing service to ensure the physical product matches the quality of the digital painting.

Bespoke Material Options

I work with professional printers to offer finishes including canvas, Hahnemuhle (308gsm) 100% cotton giclee, Canson Photographique (310gsm) or Bristol board.

Sizing and Framing

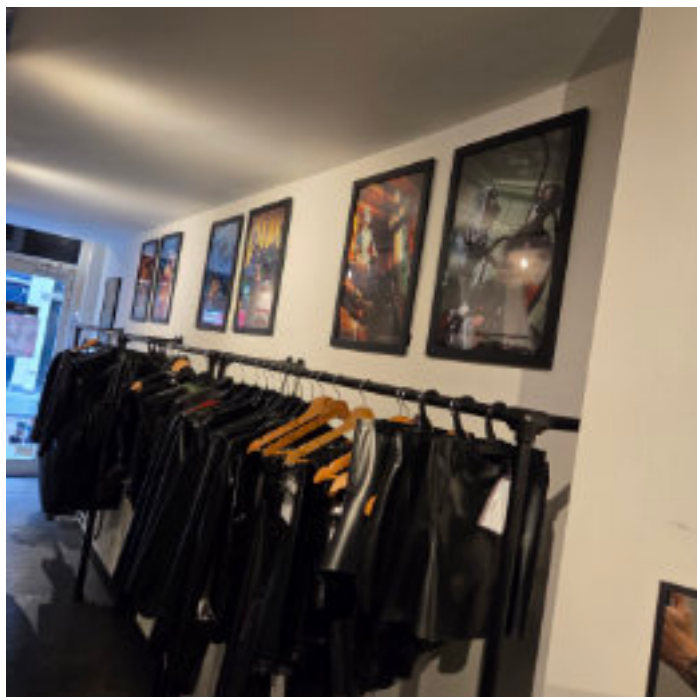
If you have specific frame requirements, please specify this during the initial brief so I can adjust the composition. My paintings have been successfully printed up to A2 size.

Exclusivity

Every print is hand-signed, dated and accompanied by a branded certificate, featuring hand-completed details for the specific work to maintain a bespoke connection to the piece.

Ordering

Prints are handled as a separate service from the digital commission, with costs calculated based on material, size and destination.



*A2 prints & custom 82cm x 82cm square print as a part of the
DeMask x phetishskin art exhibit at DeMask, Amsterdam*

PRIVACY AND PORTFOLIO RIGHTS

My portfolio is the lifeblood of the phetishskin project. My default policy is that I retain the right to showcase all commissioned work.

Likeness and Anonymity

We can use your commission to build a definitive scene, after which I can repaint the subject with an alternative face. If you are comfortable with the art being displayed but would prefer not to be credited, I am happy to keep your identity separate.

Collaboration Credit

If you wish to be acknowledged for your role in the creative direction, I am happy to credit you as a collaborator.

Total Confidentiality

If you require a commission to remain completely confidential, a privacy surcharge is applied to reflect the loss of portfolio marketing value.



"Miss Kim"

CHARGEBACK AND DISPUTE POLICY

I am committed to ensuring you are happy with your commission.

Resolution Process

If you have concerns, please raise them with me immediately. I am always happy to discuss adjustments or clarify creative choices.

Policy on Chargebacks

Any attempt to bypass this agreement via a chargeback or unauthorised reversal of payment will be treated as a breach of contract and an act of theft.

Legal Recourse

I reserve the right to provide all documentation of our consultation, workflow and approvals to your financial institution. I also reserve the right to pursue recovery of funds through all available legal channels, including debt collection services.



"The Dressing Room"

COMMISSION SERVICES SUMMARY

Service Item	Pricing Structure
Hourly Professional Rate	£50GBP
Tier 1 “Iconic Portrait”	From £400GBP
Tier 2 “Cinematic Scene”	From £750GBP
Tier 3 “Grand Narrative”	From £2000GBP
Non-Refundable Deposit	20%
Commercial Licence	+ 100%
Bespoke Printing	Custom Quote



phetishskin

Pricing June 2026

Project Reference: COMGUIDE-2026.

HOW TO GET STARTED

To start the process, please send an email to phetishskin@gmail.com with:

Your Idea

A brief summary.

References

Mood boards, costume ideas or reference images.

Technical Requirements

Target size, framing needs or intended use (personal vs commercial).

Timeline

Any specific deadlines.

I will review your brief against my current capacity and be in touch to confirm your booking.



"Nurse P"